

# CS6670: Computer Vision

Noah Snavely

## Lecture 23: Structure from motion 2

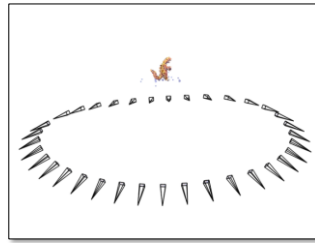
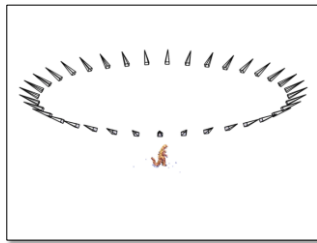


## Readings

- Szeliski, Chapter 7.1 – 7.4

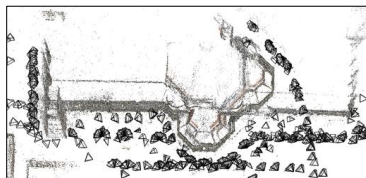
## SfM – Failure cases

- Necker reversal

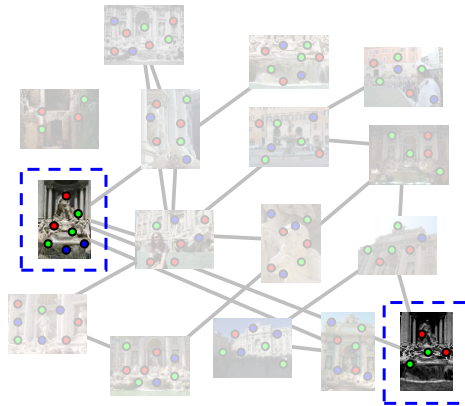


## Structure from Motion – Failure cases

- Repetitive structures



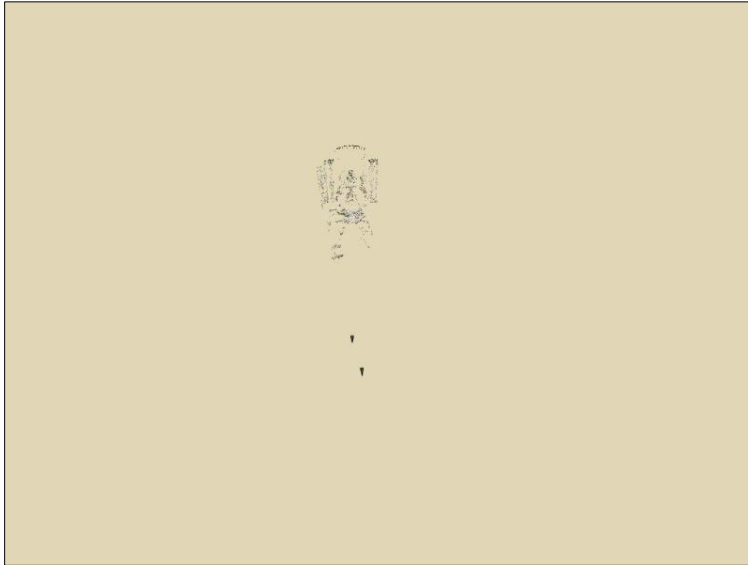
## Incremental structure from motion



## Incremental structure from motion



## Incremental structure from motion



## Incremental structure from motion

## Photo Explorer



Demo





Libration - Wikipedia, the free encyclopedia - Mozilla Firefox

File Edit View History Bookmarks Tools Help

http://en.wikipedia.org/wiki/Libration

Most Visited Latest Headlines Welcome to Ithaca C... Photosynth Constitution Room Lily Chaplin Cornell University Re... Photo City

W Dulmage-Men... W Errors-in-vari... Kim\_CVPRO8... CS1112 Fall 2... Libratio... x Spring09 CS1... Nokia Challen... moon.jpg (P...

Log in / create account

article discussion edit this page history

## Libration

From Wikipedia, the free encyclopedia


*Not to be confused with Liberation or Libation.*

In **astronomy libration** (from the Latin verb *librare* "to balance, to sway", cf. *libra* "scales") refers to the various orbital conditions which make it possible to see more than 50% of the moon's surface over time, even though the front of the Moon is tidally locked to always face towards Earth. By extension, libration can also be used to describe the same phenomenon for other orbital bodies that are nominally locked to present the same face. As the orbital processes are repetitive, libration is manifested as a slow rocking back and forth (or up and down) of the face of the orbital body as viewed from the parent body, much like the rocking of a pair of scales about the point of balance.

In the specific case of the Moon's librations, this motion permits a terrestrial observer to see slightly differing halves of the Moon's surface at different times. This means that a total of 59% of the Moon's surface can be observed from Earth.

There are three types of libration:

- Libration in longitude** is a consequence of the Moon's orbit around Earth being somewhat *eccentric*, so that the Moon's rotation sometimes leads and sometimes lags its orbital position.
- Libration in latitude** is a consequence of the Moon's axis of rotation being slightly inclined to the *normal* to the *plane* of its orbit around Earth. Its origin is analogous to the way in which the *seasons* arise from Earth's revolution about the Sun.
- Diurnal libration** is a small daily oscillation due to the Earth's rotation, which carries an observer first to one side and then to the other side of the straight line joining Earth's center to the Moon's center, allowing the observer to look first around one side of the Moon and then around the other. This is because the observer is on the surface of the Earth, not at its centre.



Simulated views of the Moon over one month, demonstrating librations in latitude and longitude.

WIKIPEDIA  
The Free Encyclopedia

navigation

- Main page
- Contents
- Featured content
- Current events
- Random article

search

Go Search

interaction

- About Wikipedia
- Community portal
- Recent changes
- Contact Wikipedia
- Donate to Wikipedia
- Help

toolbox

- What links here
- Related changes
- Upload file
- Special pages
- Printable version
- Permanent link

Questions?

## SfM applications

- 3D modeling
- Surveying
- Robot navigation and mapmaking
- Visual effects...
  - (see video)