

Perspective

CS 4620 Lecture 3

[Named Forbes 2007 Company of the Year!](#)



NVIDIA.

INFORMATION SESSION

Wednesday, Sept. 10

4:30PM – 6:00PM

Location: Upson 111

Pizza & Refreshments

BRING YOUR RESUME!!!

**OPEN TO CS, EE, EECs & ECE STUDENTS
Stop by & visit us at the Career Fair!**

www.nvidia.com/university



Announcement: CS4450/5450

- Will be MW 8:40–9:55
- How many can make the new time?

History of projection

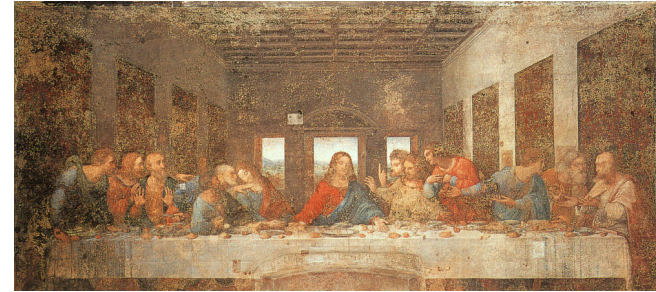
- Ancient times: Greeks wrote about laws of perspective
- Renaissance: perspective is adopted by artists



Duccio c. 1308

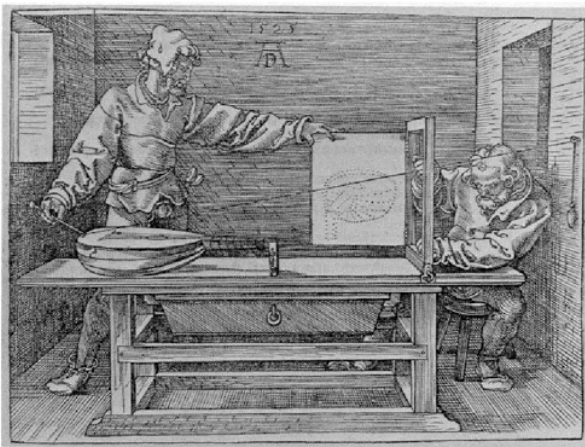
History of projection

- Later Renaissance: perspective formalized precisely



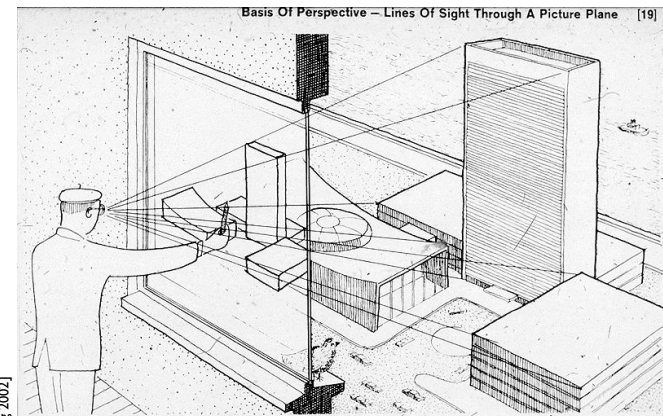
da Vinci c. 1498

Plane projection in drawing



[Carlson & Paciorek 78]

Plane projection in drawing

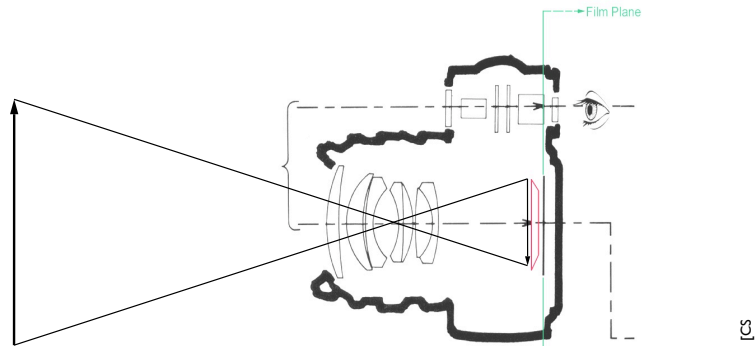


[CS 417 Spring 2002]

The concept of the picture plane may be better understood by looking through a window or other transparent plane from a fixed viewpoint. Your lines of sight, the multitude of straight lines leading from your eye to the subject, will all intersect this plane. Therefore, if you were to reach out with a grease pencil and draw the image of the subject on this plane you would be "tracing out" the infinite number of points of intersection of sight rays and plane. The result would be that you would have "transferred" a real three-dimensional object to a two-dimensional plane.

Plane projection in photography

- This is another model for what we are doing
 - applies more directly in realistic rendering



Plane projection in photography



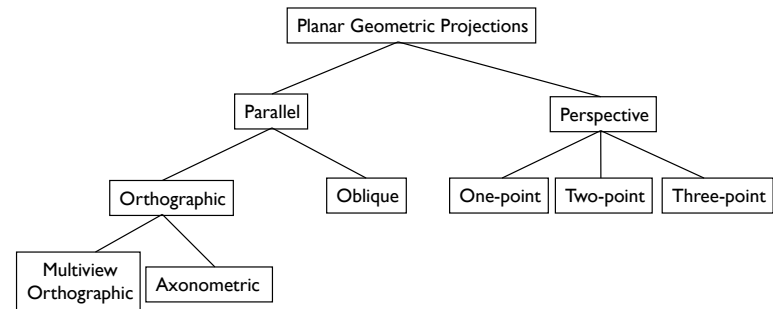
[Richard Zakia]

Ray generation vs. projection

- Viewing in ray tracing
 - start with image point
 - compute ray that projects to that point
 - do this using geometry
- Viewing by projection
 - start with 3D point
 - compute image point that it projects to
 - do this using transforms
- Inverse processes
 - ray gen. computes the preimage of projection

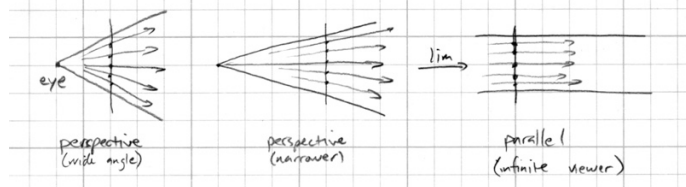
Classical projections

- Emphasis on cube-like objects
 - traditional in mechanical and architectural drawing



Parallel projection

- Viewing rays are parallel rather than diverging
 - like a perspective camera that's far away



Multiview orthographic

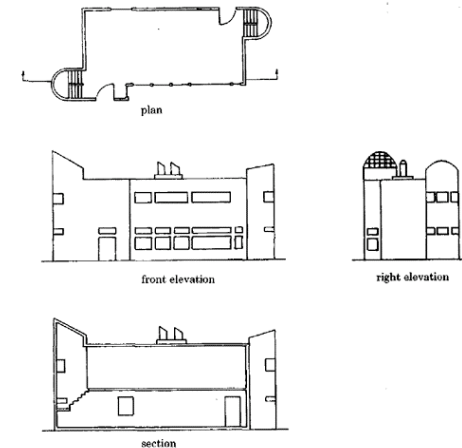
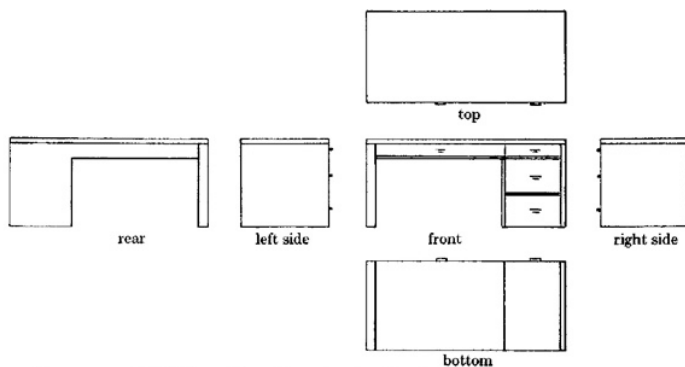


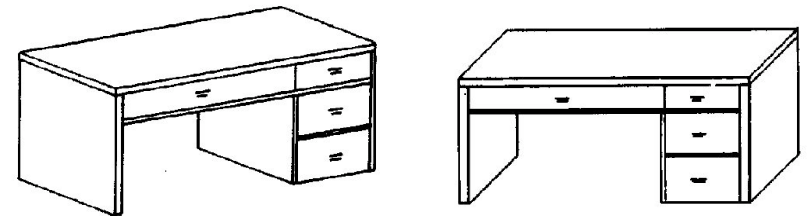
FIGURE 2-1. Multiview orthographic projection: plan, elevations, and section of a building.

Multiview orthographic



- projection plane parallel to a coordinate plane
- projection direction perpendicular to projection plane

Off-axis parallel

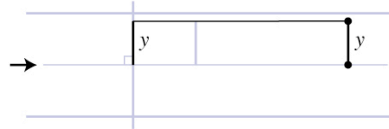


axonometric: projection plane perpendicular to projection direction but not parallel to coordinate planes

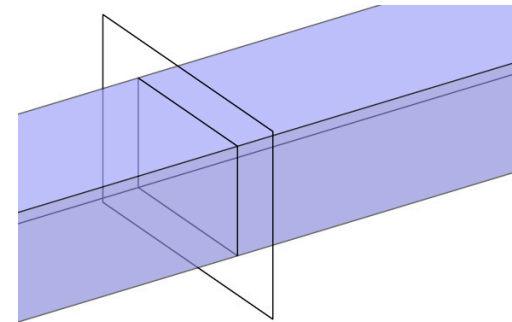
oblique: projection plane parallel to a coordinate plane but not perpendicular to projection direction.

“Orthographic” projection

- In graphics usually we lump axonometric with orthographic
 - projection plane perpendicular to projection direction
 - image height determines size of objects in image

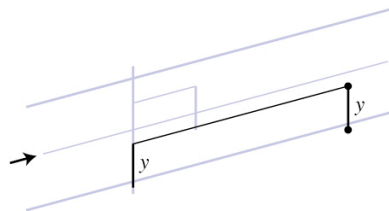


View volume: orthographic



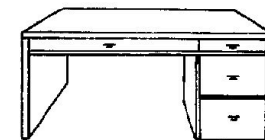
Oblique projection

- View direction no longer coincides with projection plane normal (one more parameter)
 - objects at different distances still same size
 - objects are shifted in the image depending on their depth



Perspective

one-point: projection plane parallel to a coordinate plane (to two coordinate axes)



one-point

two-point: projection plane parallel to one coordinate axis



two-point

three-point: projection plane not parallel to a coordinate axis

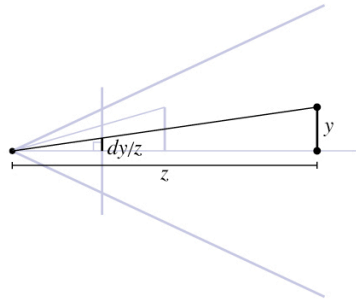


three-point

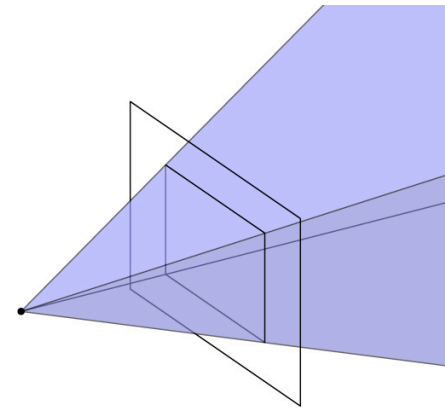
[Ca

Perspective projection (normal)

- Perspective is projection by lines through a point; “normal” = plane perpendicular to view direction
 - magnification determined by:
 - image height
 - object depth
 - image plane distance
 - f.o.v. $\alpha = 2 \operatorname{atan}(h/(2d))$
 - $y' = d y / z$
 - “normal” case corresponds to common types of cameras



View volume: perspective



Field of view (or f.o.v.)

- The angle between the rays corresponding to opposite edges of a perspective image
 - easy to compute only for “normal” perspective
 - have to decide to measure vert., horiz., or diag.
- In cameras, determined by focal length
 - confusing because of many image sizes
 - for 35mm format (36mm by 24mm image)
 - 18mm = 67° v.f.o.v. — super-wide angle
 - 28mm = 46° v.f.o.v. — wide angle
 - 50mm = 27° v.f.o.v. — “normal”
 - 100mm = 14° v.f.o.v. — narrow angle (“telephoto”)

Field of view

- Determines “strength” of perspective effects



close viewpoint
wide angle
prominent foreshortening



far viewpoint
narrow angle
little foreshortening

Choice of field of view

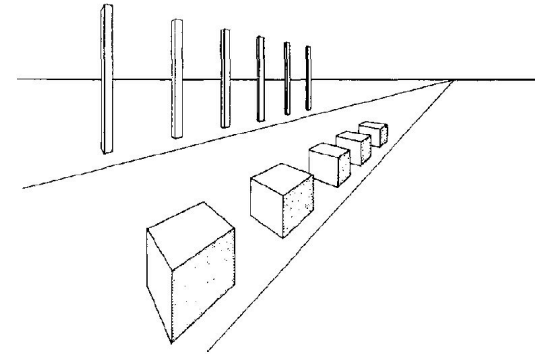
- In photography, wide angle lenses are specialty tools
 - “hard to work with”
 - easy to create weird-looking perspective effects
- In graphics, you can type in whatever f.o.v. you want
 - and people often type in big numbers!



[16]

Perspective distortions

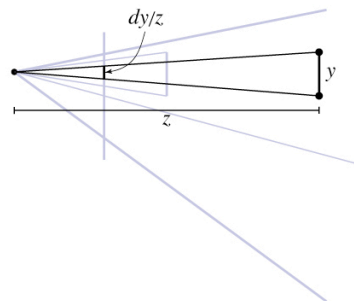
- Lengths, length ratios



[17]

Shifted perspective projection

- Perspective but with projection plane not perpendicular to view direction
 - additional parameter: projection plane normal
 - exactly equivalent to cropping out an off-center rectangle from a larger “normal” perspective
 - corresponds to *view camera* in photography



Why shifted perspective?

- Control convergence of parallel lines
- Standard example: architecture
 - buildings are taller than you, so you look up
 - top of building is farther away, so it looks smaller
- Solution: make projection plane parallel to facade
 - top of building is the same distance *from the projection plane*
- Same perspective effects can be achieved using post-processing
 - (though not the focus effects)
 - choice of *which* rays vs. arrangement of rays in image



camera tilted up: converging vertical lines



lens shifted up: parallel vertical lines

Specifying perspective projections

- Many ways to do this
 - common: from, at, up, v.f.o.v. (but not for shifted)
- One way (used in ray tracer):
 - viewpoint, view direction, up
 - establishes location and orientation of viewer
 - view direction is the direction of the center ray
 - image width, image height, projection distance
 - establishes size and location of image rectangle
 - image plane normal
 - can be different from view direction to get shifted perspective