

CS1112/1142/1132 – Remote access to Matlab (WIN)

Instruction for remotely running Matlab on the CSUG lab computers

X Windows System software needed:

If you plan to run the graphical version of Matlab and send the output to your computer, you will first need to download and install an open-source version of X Window System. We recommend using Xming X Server for Windows and the current version can be found here:

<http://sourceforge.net/projects/xming/files/latest/download>

Once the software is installed, launch it by clicking on All Programs → Xming → **XLaunch** and use the following (DEFAULT) settings:

Display settings: Multiple windows (click Next)

Session type: Start no client (click Next)

Additional parameters: no changes needed here (click Next)

Click Finish

SSH software needed:

A SSH client for Windows is needed to remotely access the CSUG computers. We recommend using PuTTY and the current version can be found here:

<http://the.earth.li/~sgtatham/putty/latest/x86/putty.exe>

Network Connection:

Access to the CSUG computers is currently allowed from all Cornell subnets including Red Rover and Eduroam. If you are attempting to connect from an off-campus network, you will need to be sure the VPN service is installed and running. More information about that can be found here:

<http://www.it.cornell.edu/services/vpn/>

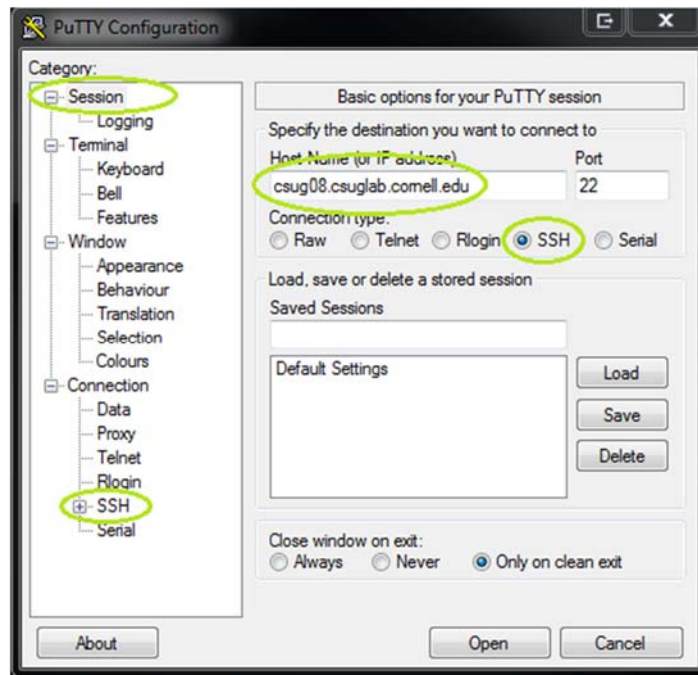
Log on via SSH:

First, be sure Xming is running on your computer using the steps above. Then, launch PuTTY and connect to one of the CSUG computers using the hostname:

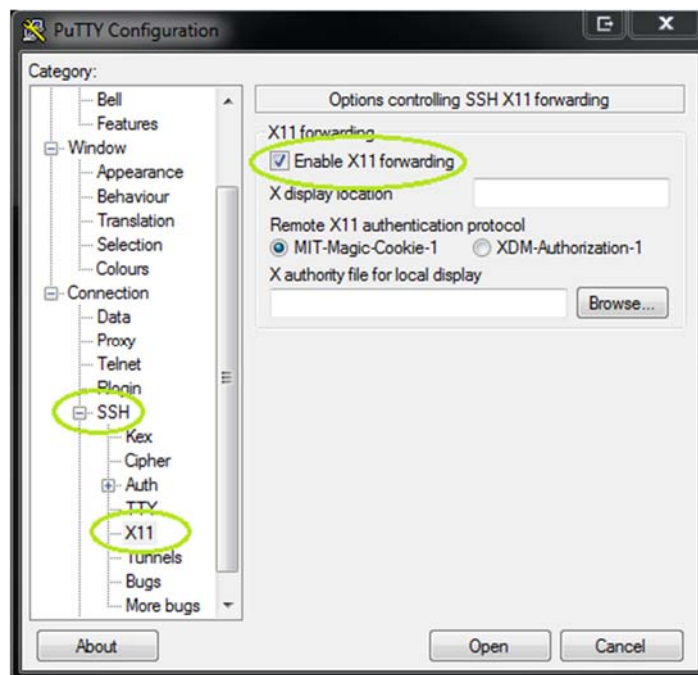
csug##.csuglab.cornell.edu

= one of the CSUG computers (11 – 15)

CS1112 / CS1132 – Remote access to Matlab (WIN)



In addition, you must specify in PuTTY to enable X11 forwarding



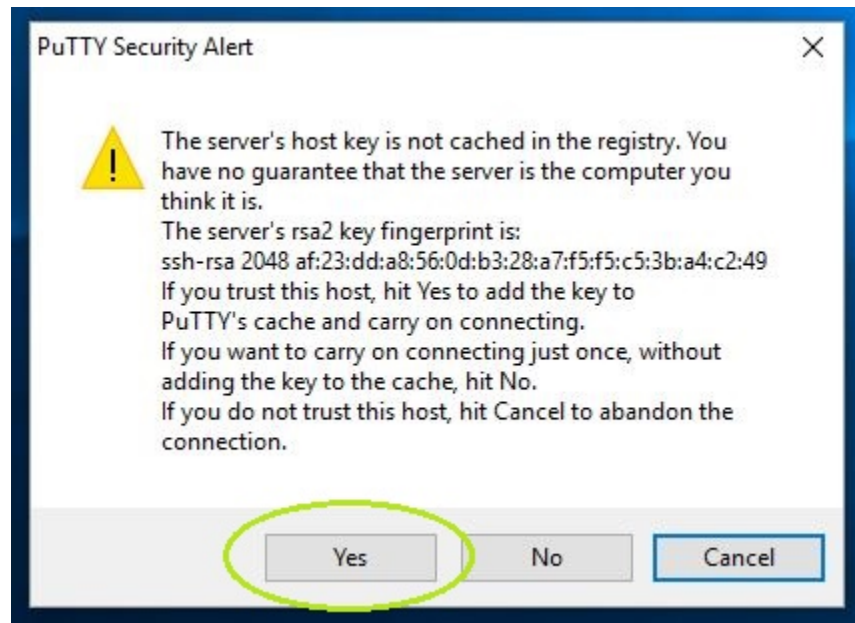
Click Open and accept the server's host key if a pop-up window opens. Log in using:

login as: netid (where netid = your Cornell Network ID)

password: your netid password (the cursor will not move as you type, but keep typing and then press <Enter>)

CS1112 / CS1132 – Remote access to Matlab (WIN)

* The first time you log in to a server you may see a message indicating the server's host key is not cached in the registry. Click Yes to add the key to PuTTY's cache and not see this message again.



Start Matlab:

Matlab R2012a is currently installed on all of the CSUG computers. To launch Matlab – in a terminal, type in the following command:

```
/usr/local/MATLAB/R2012a/bin/matlab
```

The graphical output should now be redirected to the computer you are using to remotely access the CSUG computer. Please note – this is not the same as working directly from your computer, the graphical output is being redirected to your computer so depending on the network bandwidth and server usage – you may experience some delay.

Log out (IMPORTANT):

When you have finished your work, please log out of you session. To log out – in a terminal, type in the following command:

```
exit
```