

DSFA

Spring 2018

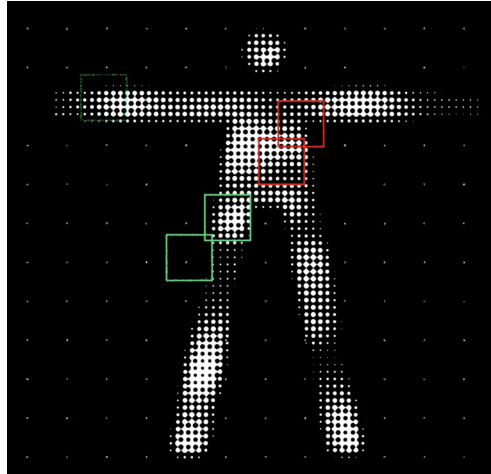
Lecture 34

Classification

Announcements

Correction to Lecture 33

Classification



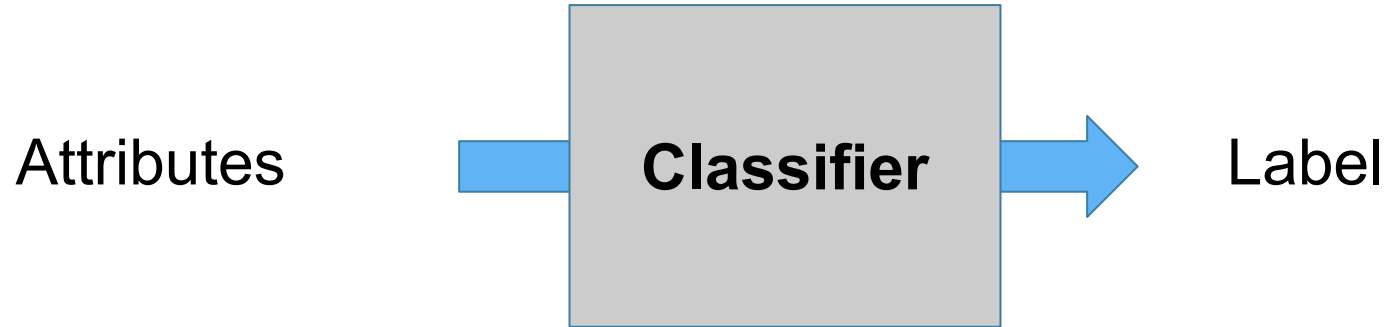
Classification

- Our study of **regression**:
 - One quantitative variable (x)
 - Predicts another quantitative variable (y)
 - Now, **classification**:
 - Many quantitative variables
 - Predict a **categorical** variable
-

Classification Terminology

- **Response variable:** the categorical variable we try to classify
 - **Classes or labels:** possible values of response variable
 - **Binary response:** 0 or 1
 - **Attributes:** variables used to make classification
-

Classifier



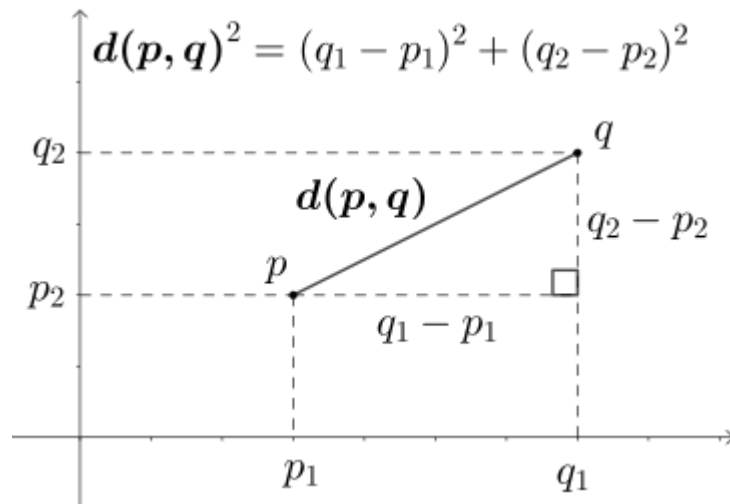
(Demo)

Nearest Neighbor

How to classify a new individual:

- Find their **nearest neighbor**: the individual closest to them in the data set
 - Assign the new individual the **same** label as that nearest neighbor
-

Distance



(Demo)
